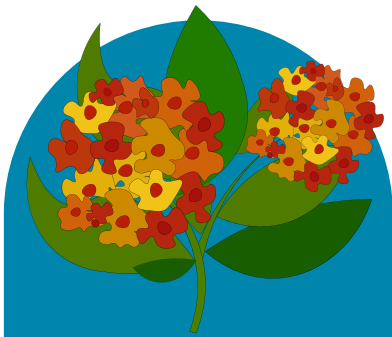


# Native Plants That Conserve Water

Texas native plants help conserve water because they are drought-tolerant and adapted to the local climate and soil conditions.



Texas Lantana

Blooms from April to October with bright orange and yellow flowers. Can grow in sand, loam, clay, or caliche soil. Leaves are characteristically pungent when crushed. Can reach 6 ft tall and broad, so give lots of room, well draining soil. BUTTERFLY MAGNET!



Butterfly Milkweed

Monarch butterflies ONLY larval host plant. Spring-Summer blooms with unique flowers

- Scientific names are:
- Butterfly Milkweed (*Asclepias tuberosa*)
  - Green Milkweed (*Asclepias viridis*)
  - Texas Milkweed (*Asclepias texana*)
  - AntelopeHorns (*Asclepias asperula*)



Passion Flower

Tendrill vine and food for several butterfly larvae. This is an exotic-looking native with lavender flowers showing a fringe of wavy segments. Blooms from May to August. Low water needs and can grow well in sand, loam and well draining soils.

Every Drop Matters



830-569-4186



[www.EvergreenUWCD.com](http://www.EvergreenUWCD.com)

EUWCD  
